

Decision support system for management of priority substances in river basin management plans

Within the SOCOPSE project a decision support system (DSS) has been developed which can help water authorities to identify the current and future environmental problems, to assess the effectiveness of various measures, and to make a selection of measures. The plans for priority substances are a part of the river basin management plans.

The DSS is a step by step plan (Figure 1). Each step consists of a number of sub-steps, feed back loops and sub-decisions guiding to a selection of the best control options. These options include for example process-oriented options, end-of-pipe techniques, product substitution and other options for example at Community level.

MAIN CONCLUSIONS

- A decision support system for the control of priority substances in river basins has been developed.
- Local water authorities have tested the DSS in practice in five river basin cases in Europe. See fact sheet about case studies.

Contact information

Willy van Tongeren, Ruud Baartmans, Jaap van der Vlies
TNO Built Environment and Geosciences, The Netherlands
E-mail: willy.vantongeren@tno.nl

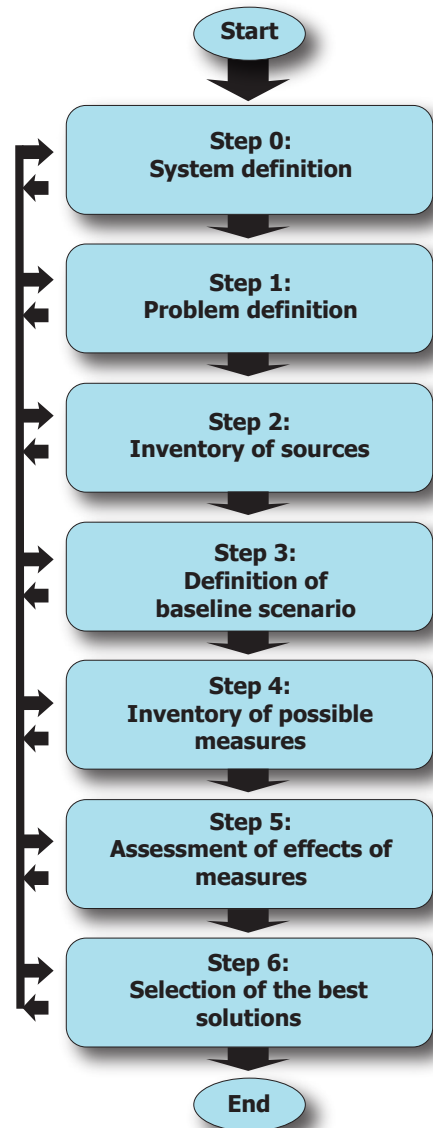


Figure 1: Overview of decision support system steps

